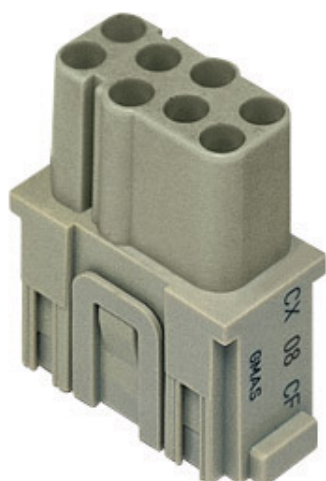



## Product Sheet

**Part Number:** CX 08 CF



<b>Family</b>	modular units series MIXO
<b>Version</b>	crimp connections
<b>Series</b>	CX
<b>Product type</b>	for female contacts 16A
<b>Model</b>	female insert
<b>Reference standard</b>	EN 61984 (2001-11)
<b>No. of poles</b>	8 poles
<b>Voltage (V)</b>	400V
<b>Current (A)</b>	16A (A.C./D.C.)
<b>Quality mark</b>	
<b>IP degree of protection</b>	IP20 degree of protection without enclosure; IP65, IP66, IP67, IP68 (EN 60529) and IP69K (DIN 40050 - 9) with enclosure
<b>Fixing centre distance</b>	1 module
<b>Impulse withstand voltage</b>	6kV
<b>Pollution degree</b>	3

The information and the dimensions contained are not binding and may be changed without prior notice.  
The drawing's dimensions are in mm.

**Notes**

the modular inserts must be installed in suitable frames which in turn are installed in traditional housings or COB panel support

CX 08 C inserts:

- characteristics according to EN 61984:  
(16A 400V 6kV 3)  
(16A 400/690V 6kV 2)
- footprint 1 modules
- for maximum current load, see the insert load curve section
- for contact crimping instructions, please see the crimping tool section (16A contacts, CCF, CCM and CC...AN series)

The information and the dimensions contained are not binding and may be changed without prior notice.  
The drawing's dimensions are in mm.